

logitech

LOGITECH SIGHT

Bring a front and center
experience to the remote
meeting world



The New Logic of Work

Cross-Sell/Upsell

Sell Sight to existing customers with medium-to-large rooms already outfitted with a Rally Bar and Rally Bar Mini.

Primary Target

New Customers – Room Solution Selling

For new customers, the “Front and Center” experience provided by a Sight and Rally Bar as a package solution is a selling point for optimal hybrid meeting equity.

Secondary Target

Messaging Overview

Sight is a tabletop companion camera that pairs with Logitech Rally Bar or Rally Bar Mini to provide remote participants with a front-and-center view of in-person interactions, ensuring a more equitable meeting experience.

Sight seamlessly frames, and presents multiple active speakers, dynamically replacing and displaying individuals as they contribute to the conversation around the table. Meanwhile, the front-of-room camera overlays the front-of-room view of all in-room participants, providing a comprehensive and engaging view of the entire meeting.

Sight integrates with leading video conferencing platforms like Microsoft Teams, Zoom, and Google Meet, making it easy to connect hybrid teams. Easy deployment and management provide a hassle-free experience, with remote monitoring, updating, and troubleshooting available through Logitech Sync and enhanced support available through Logitech Select.

Product Overview | Target Rooms



Medium-to-Large Rooms

Rooms with ~5-10 seats are perfect for Sight. Sight complements the front-of-room camera, which may have difficulty equally capturing all participants in the room.

Primary Target



Extra-Large Rooms & “Challenge” Rooms

A single Sight can alleviate some camera inequity in rooms with 10+ seats, or rooms with a particularly challenging layout.

Daisy-chaining 2 Sights will be announced post-launch.

Secondary Target

Logitech Sight | A Front and Center Experience



1

The best view from anywhere: Sight continuously coordinates with the front-of-room camera and adjusts to provide remote attendees with the best view of the in-room action.

2

Enable even better hybrid meetings with the leading video platforms: Sight integrates with the leading video conferencing platforms including Microsoft Teams, Zoom, and Google Meet.*



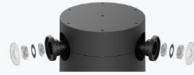
3

Easy to manage and deploy: It just takes two Cat cables to connect and power sight. Multiple mounting options for different types of tables come in the box.

Expand Room Coverage



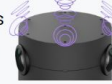
See And Be Seen



Dual 4K sensors
315° effective
Field of View

Hear And Be Heard

7 omnidirectional mics
with acoustic beams



Dedicated Mute Buttons



Requires Rally Bar & Rally Bar Mini



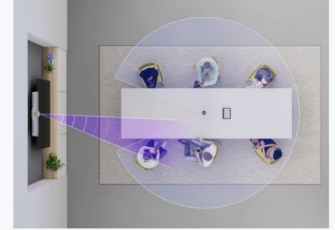
LOGITECH SIGHT

MSRP | \$1,999.99 | £2,099.99 | €2399,00 |

AI-powered tabletop camera that delivers a more equitable video conferencing experience



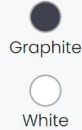
Capture The Action



Simple Installation



Colors



Certifications*



*All certifications are pending

Compatibility



Sustainability

Made with certified post-consumer recycled plastic & low-carbon aluminum. Uses FSC-certified paper for responsible packaging. Certified carbon neutral.



Mount Options



Warranty

2 Year Warranty Standard;
Extendable up to 5 Years.



Creative Assets | Product Renders



Sales Tools

[Sight Data Sheet](#)

[Sight Explainer Video](#)

[Sight 30 Second Video \(Teams\)](#)

[Sight 30 Second Video \(Zoom\)](#)

[*Updated* Logitech Team Workspace Solutions Guide](#)

[Sight vs. Meeting Owl Pro 3](#)

[Sight vs. Crestron Automate VX](#)